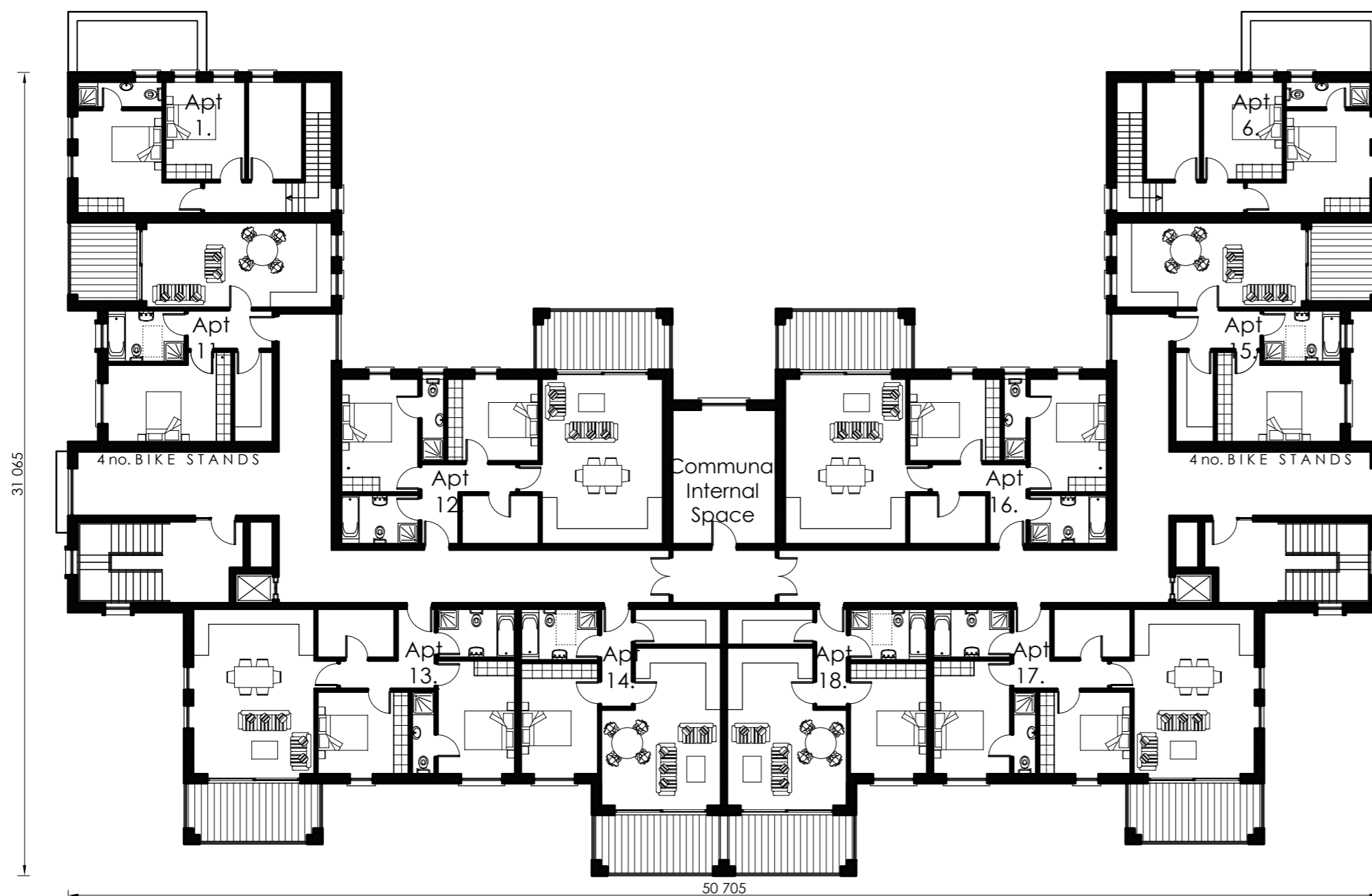


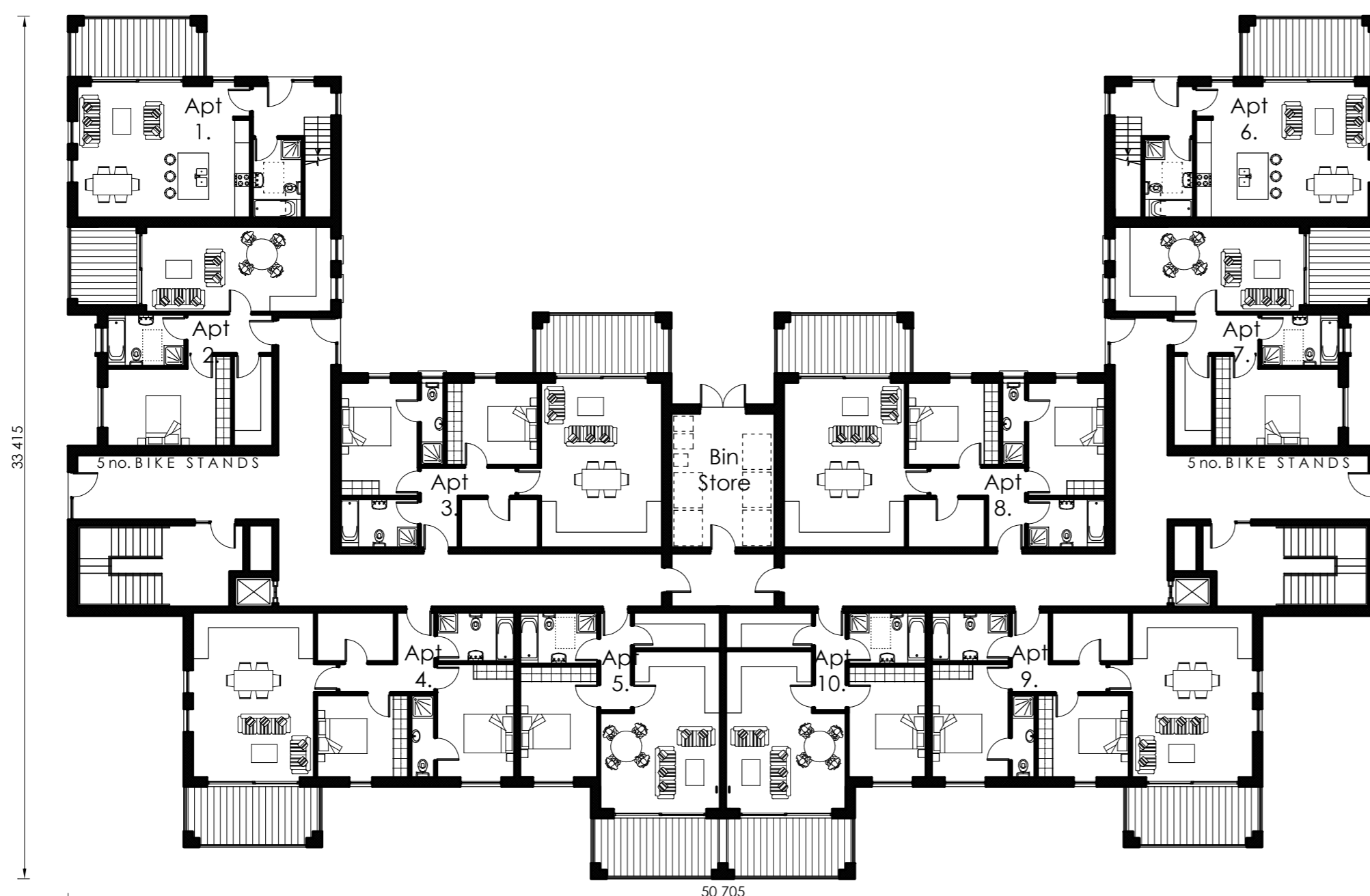
Second Floor Plan

Scale 1:200



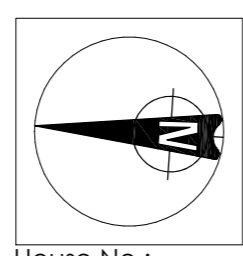
First Floor Plan

Scale 1:200

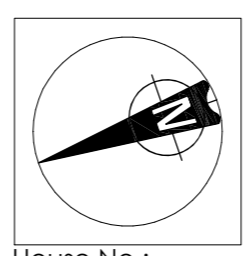


Ground Floor Plan

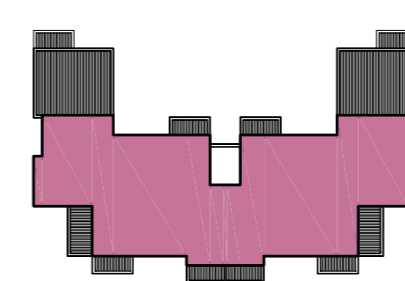
Scale 1:200



House No.: 208-239



House No.: 240-271



Type 'E' [Total Area = 2 x 3,324.0 m<sup>2</sup>]

- [2 x] 8 no. 1-bed [55.3 m<sup>2</sup>] Apartment nos. 5, 10, 14, 18, 22, 26, 29 & 32
- [2 x] 4 no. 1-bed [56.8 m<sup>2</sup>] Apartment nos. 2, 7, 11 & 15
- [2 x] 2 no. 1-bed [57.9 m<sup>2</sup>] Apartment nos. 19 & 23
- [2 x] 2 no. 1-bed [58.6 m<sup>2</sup>] Apartment nos. 28 & 31
- [2 x] 14 no. 2-bed [79.7 m<sup>2</sup>] Apartment nos. 3, 4, 8, 9, 12, 13, 16, 17, 20, 21, 24, 25, 27 & 30
- [2 x] 2 no. 2-bed [100.5 m<sup>2</sup>] Apartment nos. 1 & 6

Revision	Description	Date
2021	<b>GLEESON MCSWEENEY</b>	
Project	Proposed residential development at Ballykeeffe, Raheen, Limerick. For: DW Raheen Developments Ltd.	Stage Planning
Title	Apartment Building Type E - Floor Plans	Sheet 1 of 2
Scale	1:200 @ A1	Date December 2021
Drawn	M.M.	Rev
		Drg No. <b>1704-10-129</b>
		99 O'Connell St., Limerick
		T 061 412277 E info@gleesonmcsweeney.ie

ARCHITECTS